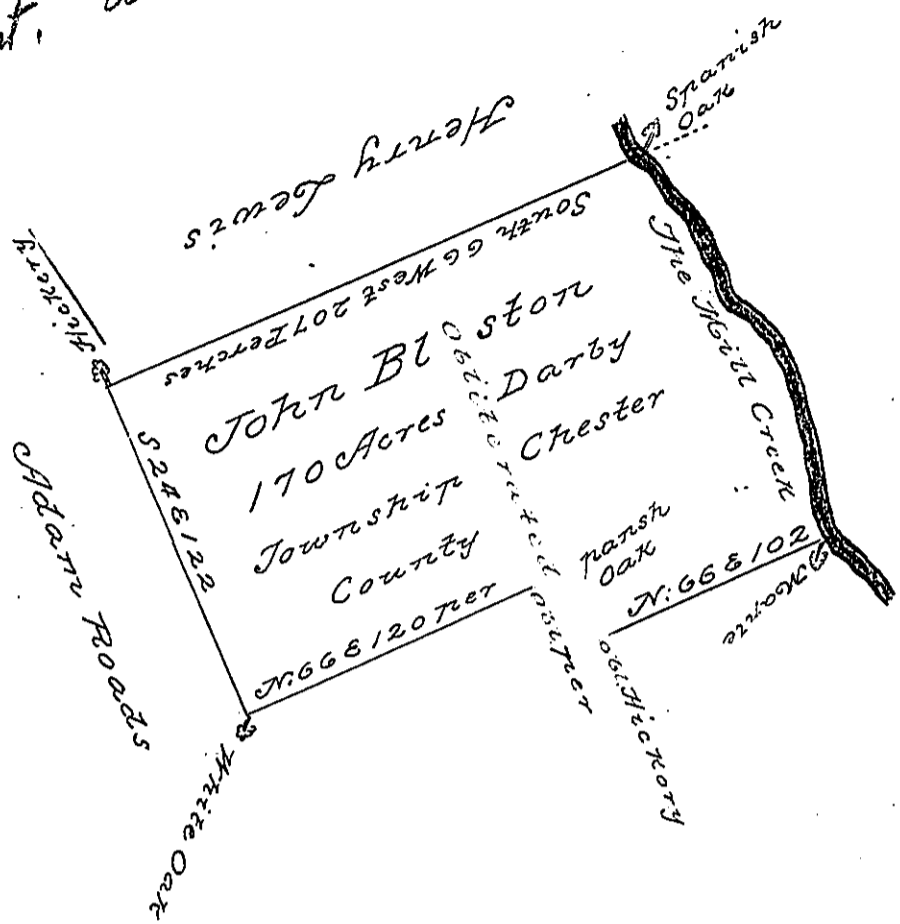


Pat. a-3-325-



The Courses up
ye Mill Creek

Angles with ye Meridian	Paces
Wes E	9
N 18 W	22
N 40 W	12
N 32 W	18
S 78 W	7
N 15 W	26
N 50 W	6
N 07 W	40
Wes E	7
N 34 W	20

Resurveyed the eighth of ye first month
1703 by Virtue of a Warrant from the Com-
missioners of Property to me directed dated
the 28th of ye 2^d month 1702

Isaac Taylor

IN TESTIMONY that the above is a copy of the original remaining on file in the
Department of Internal Affairs of Pennsylvania, made con-
formably to an Act of Assembly approved the 16th day of
February, 1833, I have hereunto set my Hand and caused
the Seal of said Department to be affixed at Harrisburg, this
second day of February 1897

James W. Patta
Secretary of Internal Affairs.